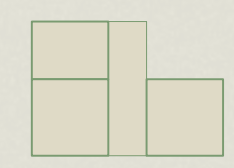
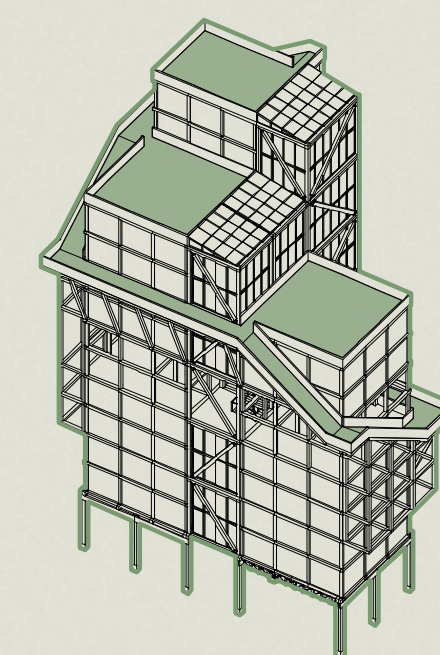




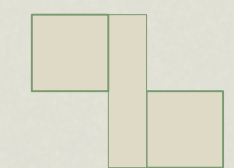
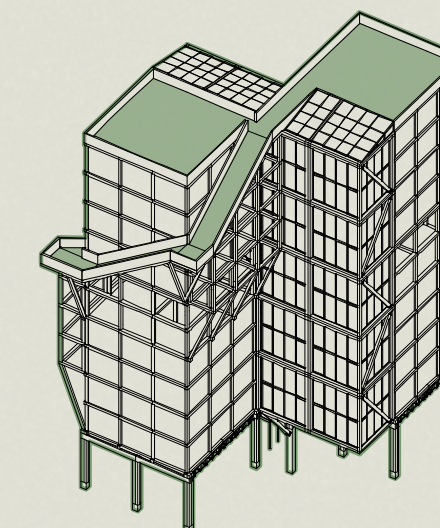
# Apartment towers/green roofs

The entire apartment complex is made up of six separate towers with different arrangements of volumes around each tower. Every tower is comprised of two modular sections (above and below raised street level), that each have between eight and ten volumes. These two modular sections are 10m x 10m or 7.5m x 10m respectively and both 6m high. Within each section are five different apartments volumes that are intended for diverse demographics.

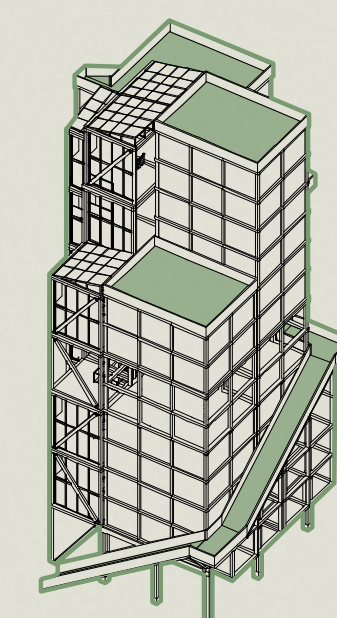
Each apartment tower is constructed entirely of wood except for the foundation and repurposed metal façade panels from the existing office buildings. The three dimensional wooden grid allows for the façade and floors to be pre-fab elements. This in turn allows for easy variation of the façade as well as personal character to emerge over time for each home as the structure remains untouched.



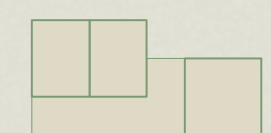
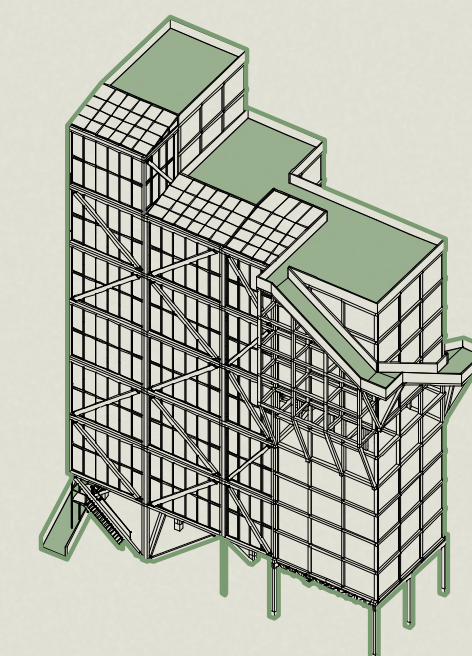
Tower A. 3x  
Apartment volumes:  
7x 10x10m  
5x 7.5x10m



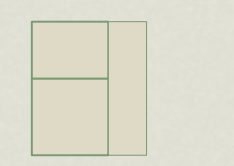
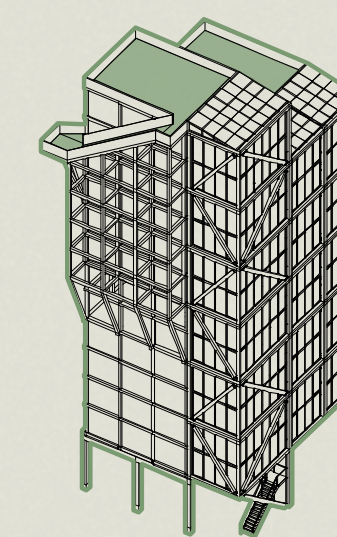
Tower B. 2x  
Apartment volumes:  
8x 10x10m



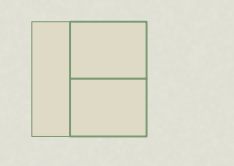
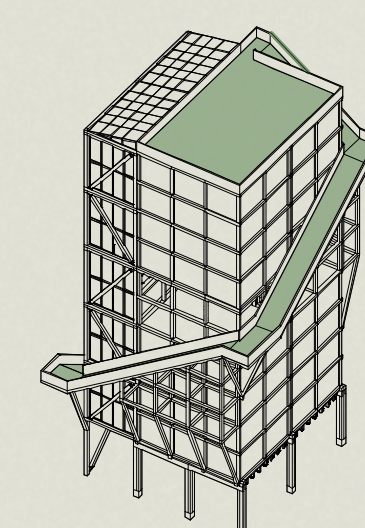
Tower C. 9x  
Apartment volumes:  
4x 10x10m  
8x 7.5x10m



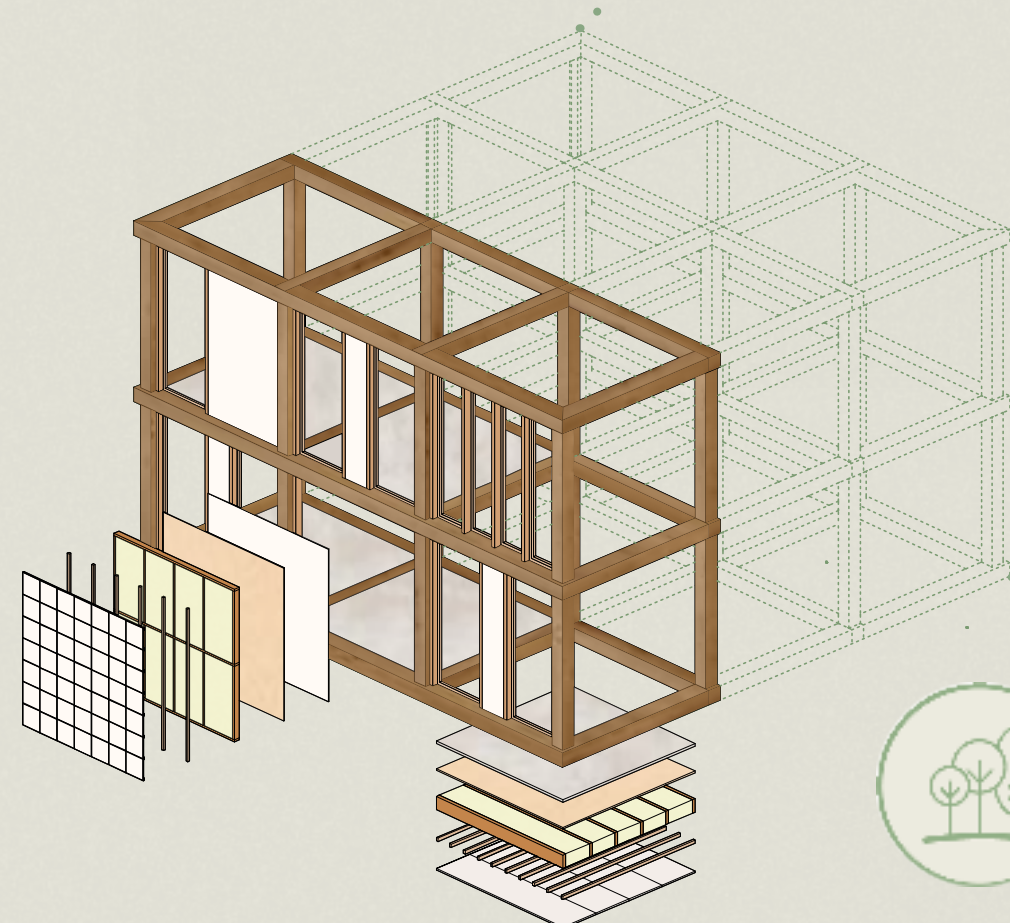
Tower D. 4x  
Apartment volumes:  
4x 10x10m  
9x 7.5x10m



Tower E. 5x  
Apartment volumes:  
4x 10x10m  
5x 7.5x10m



Tower F. 4x  
Apartment volumes:  
8x 10x10m



The fully wooden construction of the complex means that there is a permanent CO<sub>2</sub> storage of circa 80.000 m<sup>3</sup>. Given that the current buildings have a CO<sub>2</sub> storage of 0,0 m<sup>3</sup>, this difference is significant. Additionally, the green roofs and routes contribute an extra 7600m<sup>2</sup> of greenery, which will eventually have a considerable contribution both to the biodiversity and the CO<sub>2</sub> storage. The fully wooden construction will ensure that the complex meets the new 2025 building requirements from the Metropolitan Region Amsterdam (MRA), mandating that 20% of new buildings be built of wood or other bio-based materials.